

Ghid preinstalare executabil FTDI pentru Windows 7

Acest executabil instaleaza driverul **inainte ca produsul sa fie conectat la calculator**.

Executabilul il veti gasi pe CD-ul care insoteste produsul (denumire: CDM21224_setup.exe).

Descarcati driver-ul pe calculator.

Click dreapta si selectati "Run as administrator", precum in fig.1

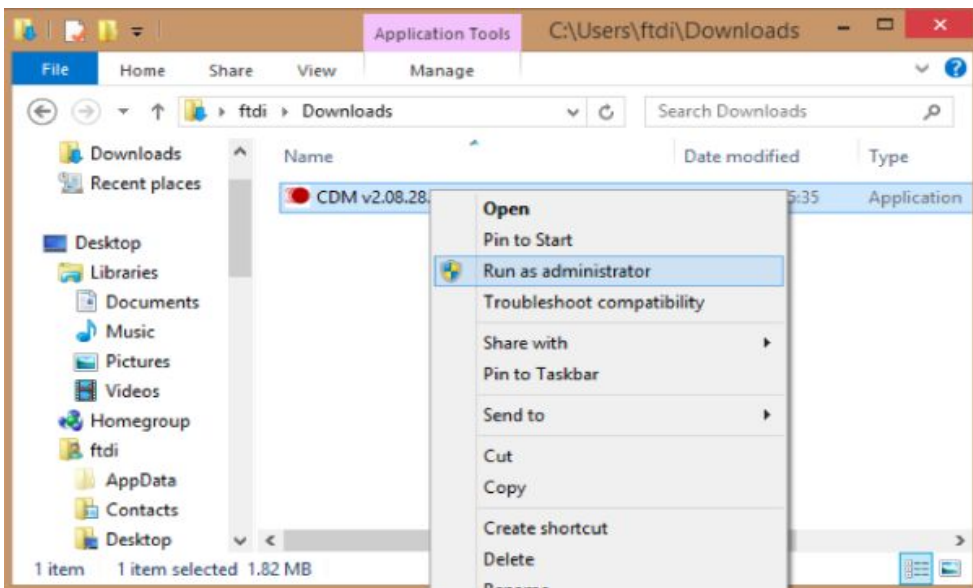
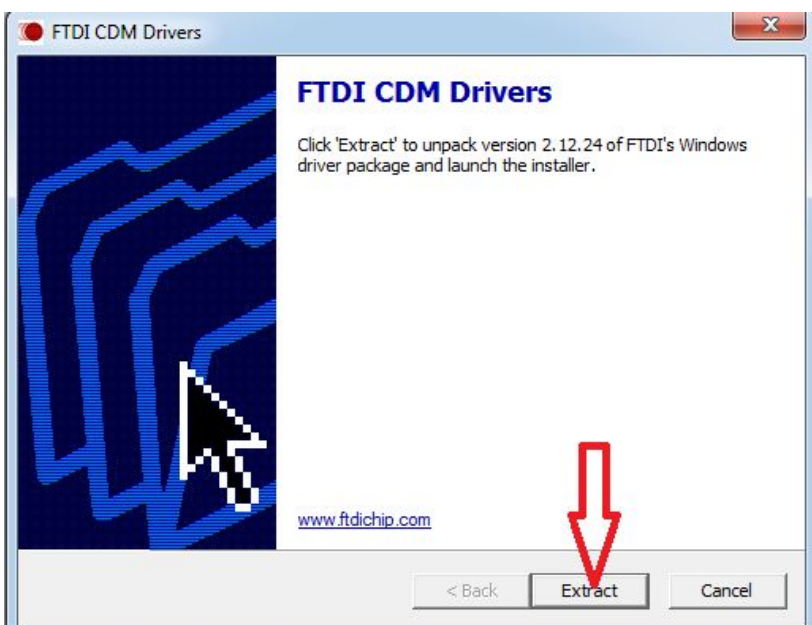


Fig.1



Apasati butonul "Extract" (Fig.2)

Fig.2

Urmati instructiunile de instalare (Fig.3), inclusiv acceptarea termenilor de utilizare licenta (Fig.4), iar driverul va fi instalat automat. Instalarea cu succes este evidentiata in fig. 5

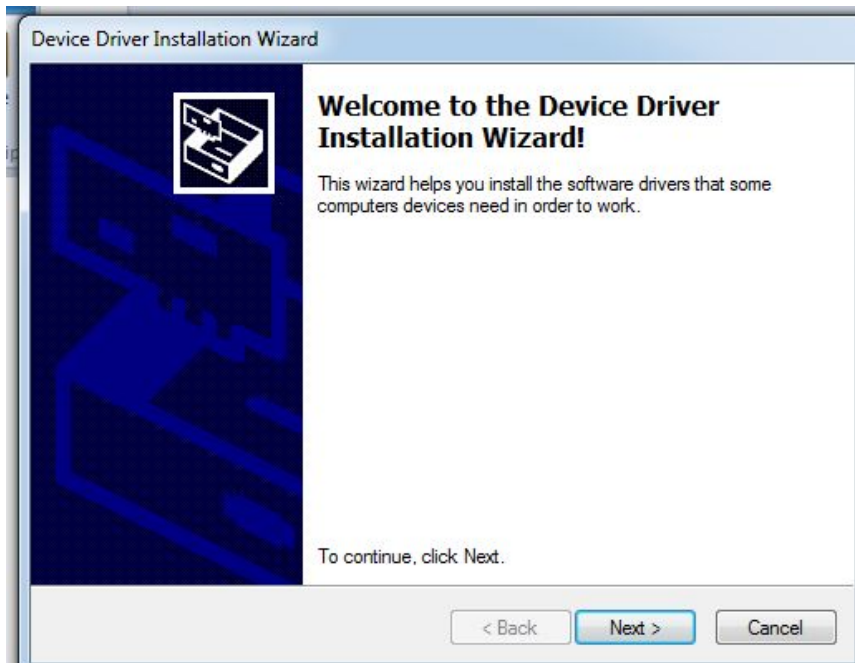


Fig.3

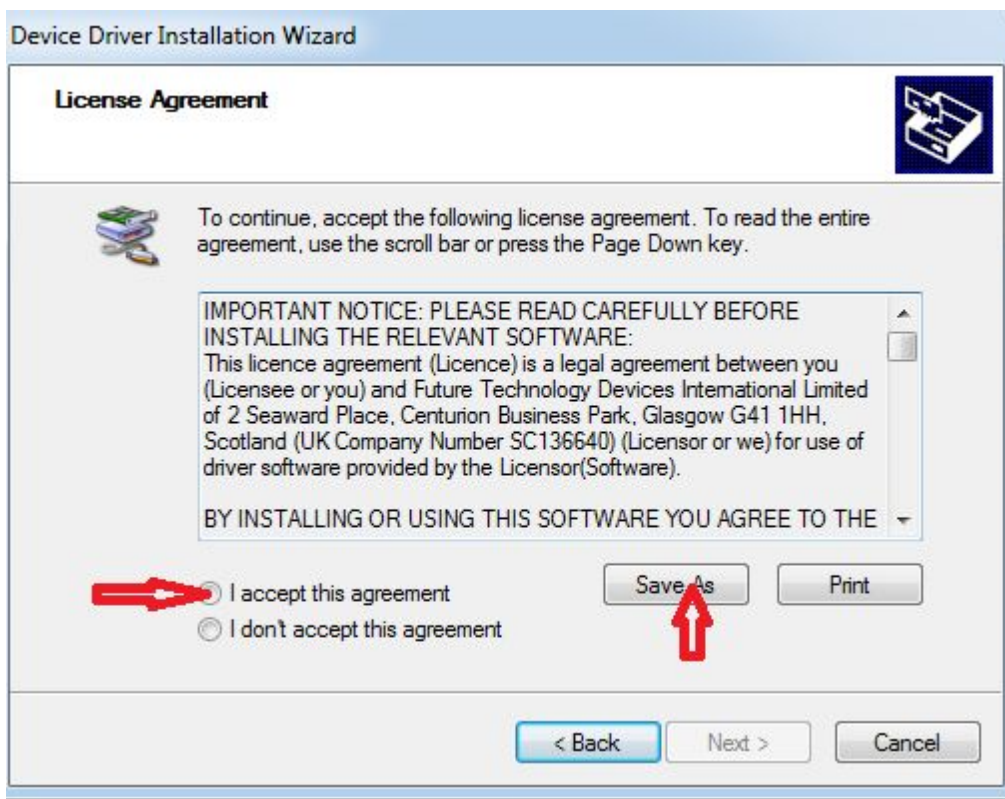


Fig.4

Device Driver Installation Wizard

License Agreement

To continue, accept the following license agreement. To read the entire agreement, use the scroll bar or press the Page Down key.


IMPORTANT NOTICE: PLEASE READ CAREFULLY BEFORE INSTALLING THE RELEVANT SOFTWARE:
This licence agreement (Licence) is a legal agreement between you (Licensee or you) and Future Technology Devices International Limited of 2 Seaward Place, Centurion Business Park, Glasgow G41 1HH, Scotland (UK Company Number SC136640) (Licensor or we) for use of driver software provided by the Licensor(Software).

BY INSTALLING OR USING THIS SOFTWARE YOU AGREE TO THE

I accept this agreement
 I don't accept this agreement

Save As Print

< Back **Next >** Cancel



Device Driver Installation Wizard

The drivers are now installing...

Please wait while the drivers install. This may take some time to complete.

< Back Next > Cancel

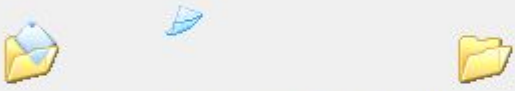


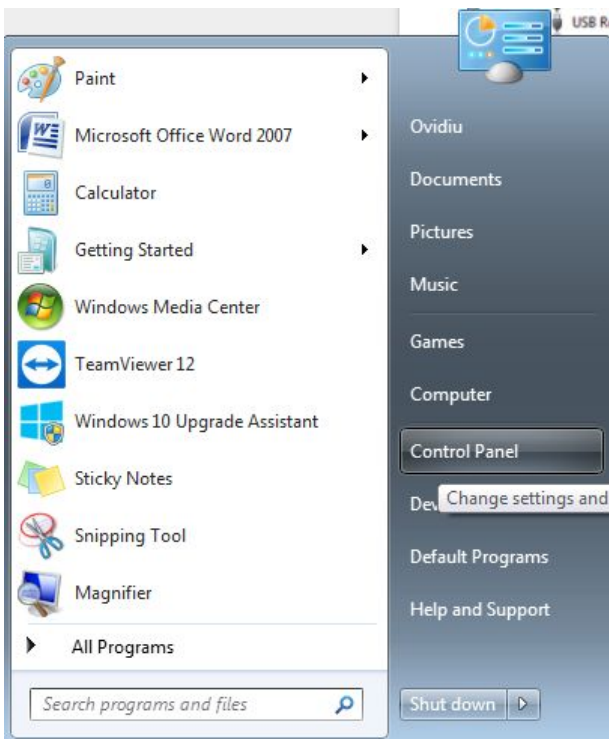


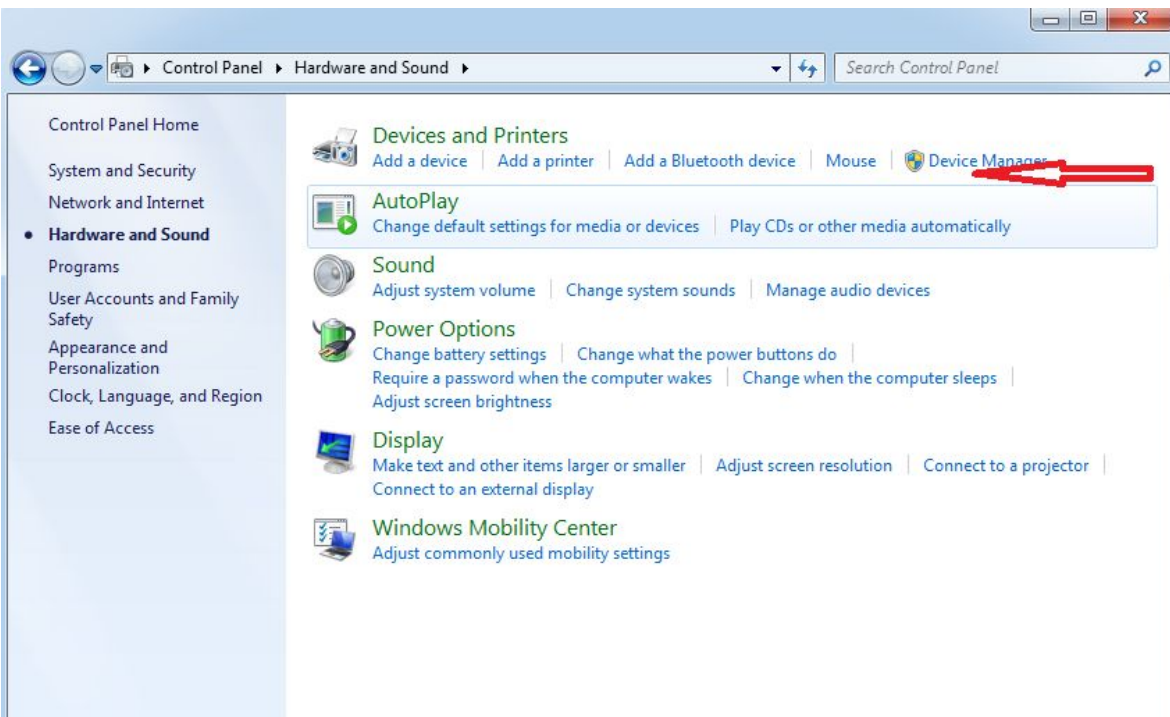
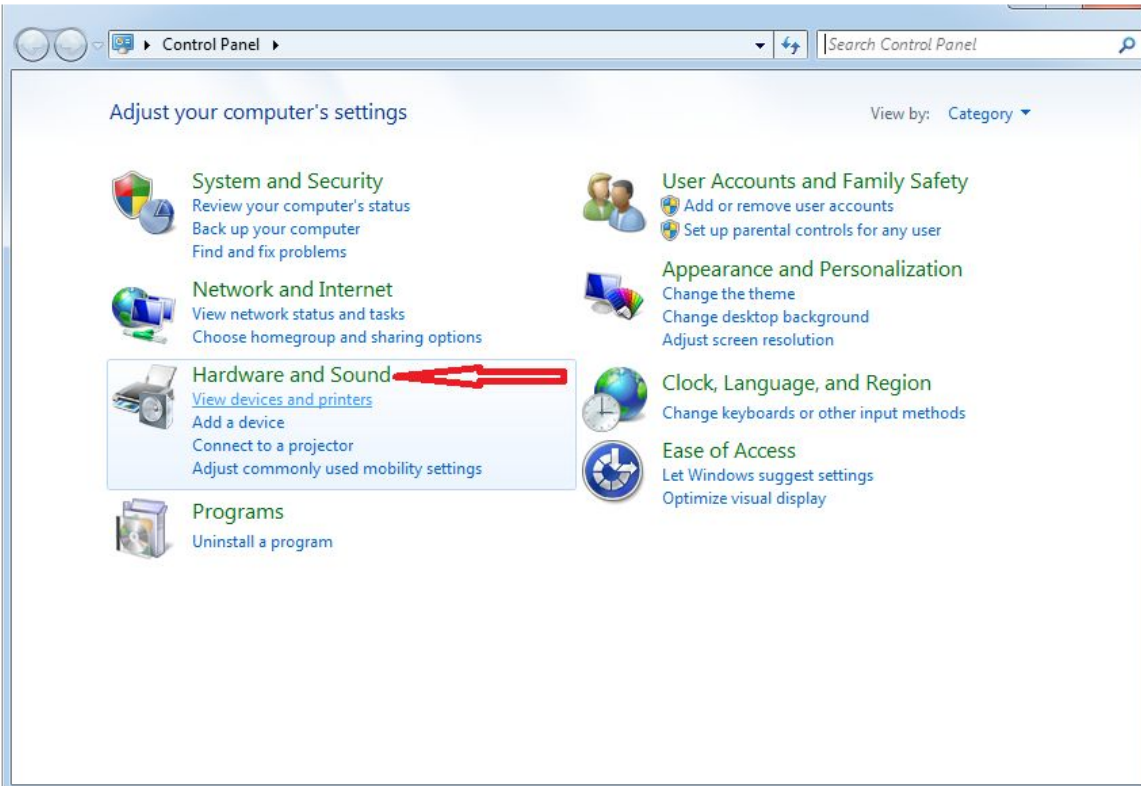
Fig.5

Ori de cate ori veti conecta produsul la calculator, acesta va instala automat driverele pe primul COM liber.

Verificarea se face in Device Manager.

“Control Panel”→ “Hardware and Sound”→ “Device Manager”





Ferestrea "Device Manager" trebuie sa fie similara fig. 6

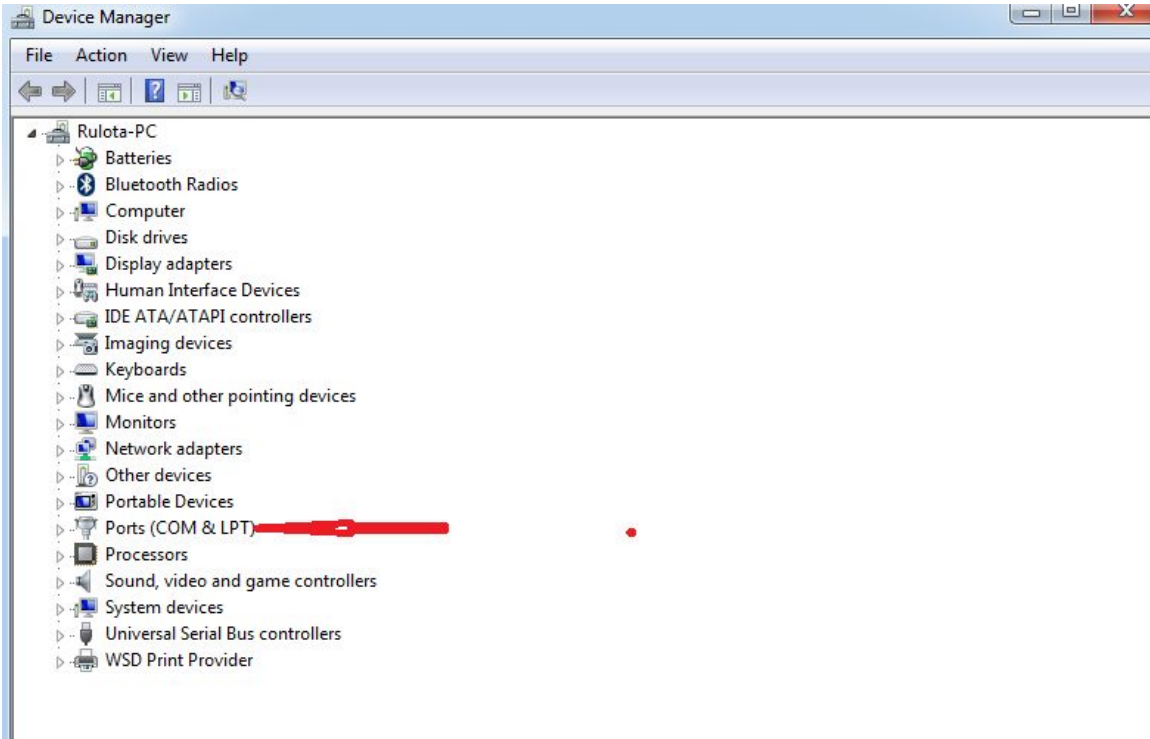


Fig.6

Pentru ca driverele sa fie instalate corect, la Ports (COM & LPT) ar trebui sa apara urmatoarele **“USB Serial Port”** si **COM-ul gasit disponibil. (fig.7).**

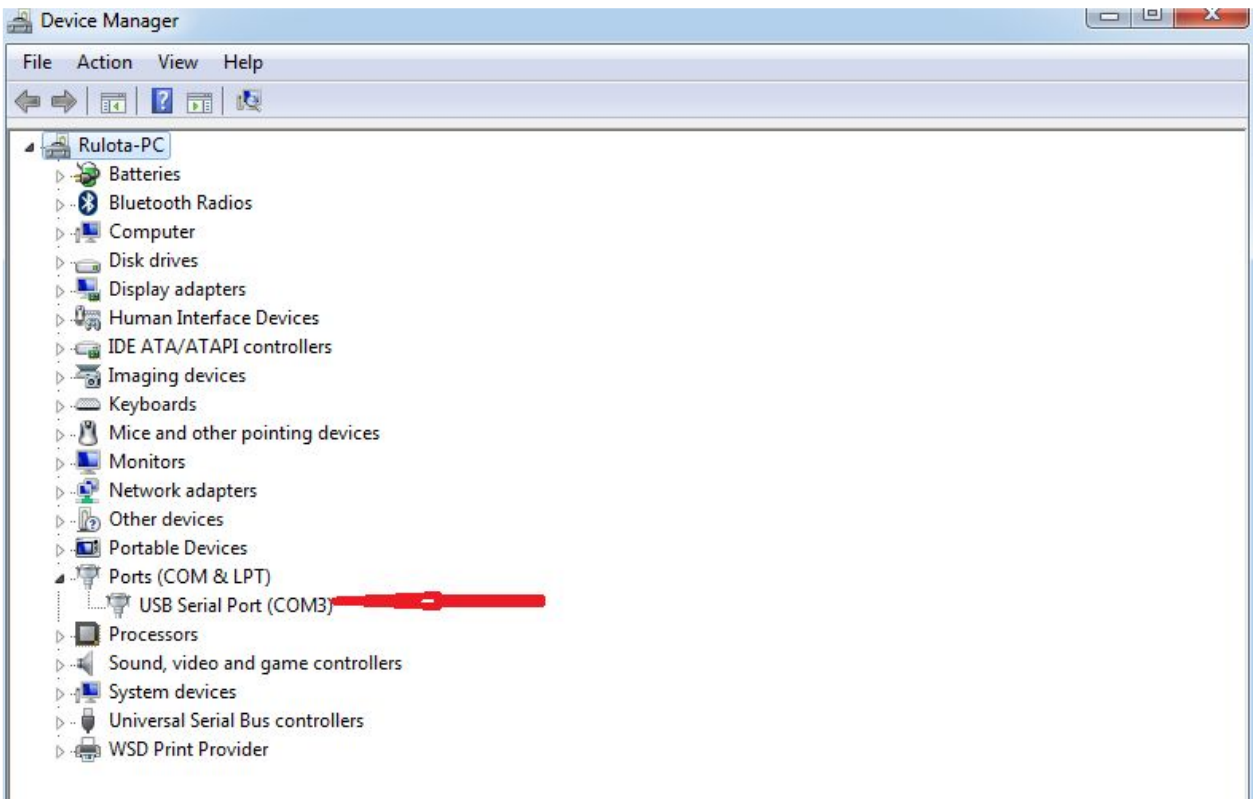


Fig.7



NOTA! Nu toate dispozitivele se instaleaza pe COM3. Alocarea numarului se face de catre calculator, in functie de primul port COM disponibil.

Aceasta valoare a COM-ului trebuie sa fie retinuta si selectata in softul produsului SmarSoft (asa cum o sa cititi in materialul de prezentare soft care insoteste aceasta documentatie)